



Protein Sources Swine Update

January/February 2012

Lori Feldmann, DVM

What's the deal with A. suis? This has been one of our most frequently asked questions in the production department this fall. For those of you not familiar, A. suis (*Actinobacillus suis*) is a bacterium that can normally be found in the upper respiratory tract of swine. When given the opportunity, A. suis can create a systemic infection that will often lead to the sudden death of nice pigs. Sometimes we will see these pigs go down and get picked on before death.

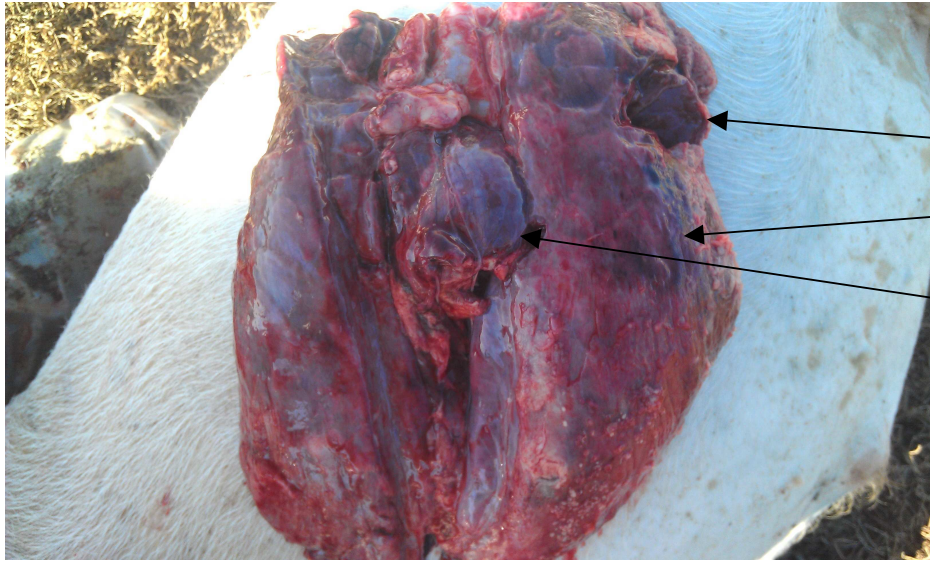
On necropsy, typical lesions we find include:

- Fluid around the heart and in the chest cavity
- Dark red/purple areas of hemorrhage in the lungs
- Enlarged liver

In Protein Sources managed nurseries, we vaccinate for this with our autogenous (Auto Yellow) vaccine. This vaccine also includes Erysipelas, *Streptococcus suis*, and *Haemophilus parasuis*. For many years we have been successful giving one dose of this vaccine. Every 3-4 weeks, we would see a case of A. suis in a finisher that would treat easily. However, in the past two months, we have seen an increase in the number of A. suis cases we are diagnosing out in the finishers and have had more difficulty treating these cases.

We are making some changes to the Auto Yellow vaccine to see if we can still get by with one dose. Changing a vaccine takes time, so as we are working out the details with that, we are treating affected groups of pigs with Cephalexin or Gentamicin in the water. If pigs relapse after one treatment, we have been recommending to booster the Auto Yellow vaccine. In cases where the vaccine was boosted, we have seen the A. suis settle down within 7-10 days.

If you have any questions regarding A. suis or would like someone to look at your pigs, please contact Dr. Lori Feldmann or Dr. Mark FitzSimmons in the Protein Sources Management office at 507-524-4511.



Hemorrhagic areas in the lungs. These are dark red and sometimes necrotic when cut into.



Enlarged liver. This liver is approximately twice the size it should be.